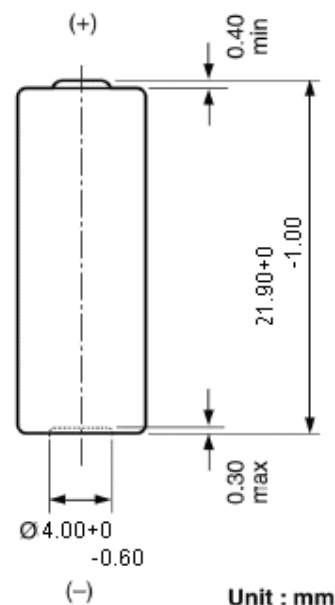
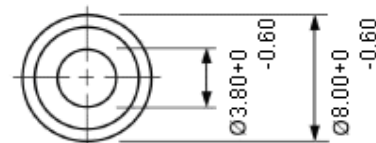


Description	: Alkaline High Voltage Battery
Nominal Voltage	: 9Volts
Nominal Dimensions	: Ø8.0mm×21.9mm
Terminal	: Nickel plated flat contacts - protruded red(+); recessed black (-)
Jacket	: Metal jacket
Internal Connection	: Pressure
Applications	: Remote controller
Average Weight	: 3.5g
Date Code	: Unless otherwise specified, each batteries will carry a numeric year code and analogue month code
Shelf Life	: Not less than 90% of the service capacity within first year. , not less than 85% of the service capacity with third year storage at $22 \pm 3 \text{ }^{\circ}\text{C}$ 40-80 %RH
Insulation	: 5MΩ min.
Resistance	
Close Circuit Voltage	: 8 Volts (min.)(load resistor 1.2kΩ at $22 \pm 3 \text{ }^{\circ}\text{C}$ for 0.1 to 2 seconds)
Current Drain	: Under 15mA pulse, 0.5mA continuous
Nominal Service Life	: 38hrs (at 15kΩ load) (to 4.5V at $22 \pm 3 \text{ }^{\circ}\text{C}$)
Average Service	: 20mAh(at 15kΩ load)
Capacity	: (to 4.5V at $22 \pm 3 \text{ }^{\circ}\text{C}$)

Cross References:

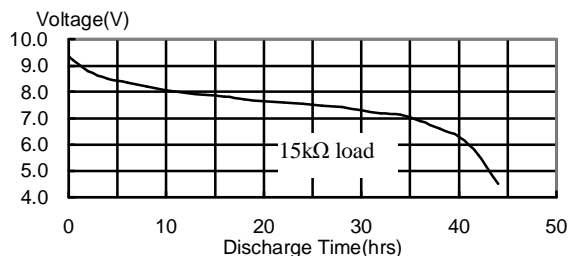
GP	Eveready	Duracell	Varta
29A	---	---	---

Model No.: GP29A



Unit : mm

Typical Discharge characteristics at $22 \pm 3 \text{ }^{\circ}\text{C}$



The information (subject to change without prior notice) contained in this document is for reference only and should not be used as a basis for product guarantee or warranty. For applications other than those described here, please consult your nearest GP Sales and Marketing Office or Distributors.